



SL Pro GNSS Receiver

A complete, rugged GNSS position solution for autonomy

The SL Pro receiver offers a robust position solution for all autonomy applications, including under trees and in urban canyons.

The all-in-one solution includes a phase matched antenna for peak performance and robustness of solution.

Fully Unlocked!

No nickel and diming here! All SL receivers are fully unlocked out of the box and ready for RTK and PPP.

FE - Precise Point Positioning (PPP) Corrections

FE PPP provides a solution that covers entire continents¹. Using either L-Band satellite or internet based solution to receive the FE correction. Sub 4" (10cm) precision without the need for a base station or tower network. Load and Go FE allows you to purchase monthly subscriptions directly from Seirrowon with your phone or tablet. No more calling the dealer then waiting on activation.

B.Y.O. Cell Connection

You know the best Cell provider in your area. Why be forced to use a different carrier? Either use your phone as a hot spot or use a rugged hot spot solution for RTK or FE corrections.

Advanced User Interface

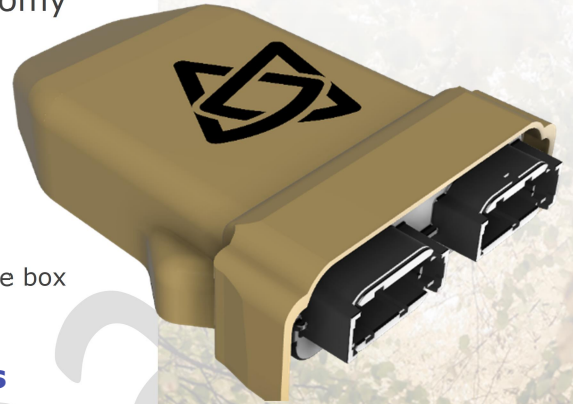
Built in Web page allows set up with any WIFI device (phone, tablet, or PC). No cables or set up software required. Presets allow quick, automatic configuration of new receivers when replacing older ones.

Remote Support

Via WIFI, the SL Receiver can send its settings directly to Seirrowon secured server allowing a replacement unit to be pre-configured before shipment. Remote diagnostics also allow for fast diagnosis of issues.

Integrated Sensor Fusion

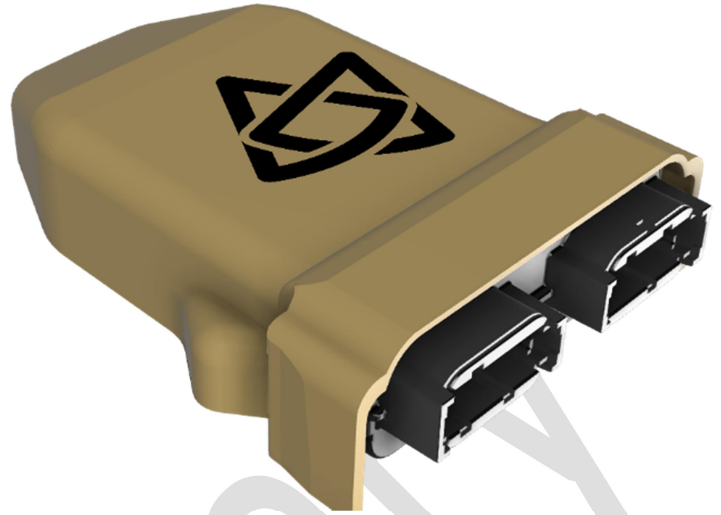
Integrated Sensor Fusion creates a robust solution for densely treed areas and urban canyon conditions, functioning even when GNSS is obstructed².



1. FE PPP currently covers North America and Europe only. Other continents will follow.
2. Performance of sensor fusion will degrade over time without GNSS

Seirrowon Labs GNSS Offering

	SL Lite 10Hz	SL Lite R 20Hz	SL Pro 20Hz
GNSS Output Rate			
GPS L1, L2C	✓	✓	✓
GLONASS L1, L2	✓	✓	✓
Galileo E1, E5a	✓	✓	✓
Beidou B1, B2		✓	✓
QZSSL1, L2C		✓	✓
L-band PPP		✓	✓
PPP over IP	✓	✓	✓
Sensor Fusion			
Basic		✓	
Advanced			✓
Remote Backup	✓	✓	✓
Remote Support	✓	✓	✓
Simulated Radar	✓	✓	✓
PPS	✓	✓	✓
WIFI	✓	✓	✓
Bluetooth	✓	✓	✓
Simple User Interface	✓	✓	✓
NTRIP Client	✓	✓	✓



Receiver Specifications

Signals	185 Channel	
GPS	L1, L2C	
GLONASS	L1, L2	
Galileo	E1, E5B	
Beidou	B1, B2	
QZSS	L1, L2C	
L-Band	1 Channel (PPP)	
Accuracy	Static	P2P
Stand Alone	5ft (1.5m)	12in (30cm)
SBAS	3.3ft (1m)	8in (20cm)
PPP	4in (10cm)	1in (2.5cm)
RTK	1in (2.5cm)	1in (2.5cm)
Tilt	+/- 1in (2cm) at 6.7ft (2m) High	
L-Band Receiver	Single Channel	
Type	Single Channel	
Frequency	1525 - 1559 MHz	
Acc Time	10s	
Output Rate	20 Hz	
Sensor Fusion	GNSS Embedded	
TTFB	< 10s	
Correction Types	RTCM3.x, RTCM2.x and PPP	
Connectivity	2 x Serial Ports Wi-Fi 802.11 b/g/n Bluetooth v4.2 BLE PPS or Speed	
User Interface	Web UI	
LEDs	Power, GNSS, Correction, and Wi-Fi/Bluetooth	

Updates Support

Via Internet
User-enabled Support
Backup and Historical
Diagnostic Information

Operating Characteristics

Temperature Operation	~ -22°F (-30C) – 170°F (76C)
Storage	~ -40°F (-40C) - 185°F (90C)
Shock	TBD
IP Rating	IP67
Humidity	100%
Vibration	TBD
Electrical Power	9 – 32vDC
Dimensions	< 1W 5"W(125mm)x7"L(175mm)x 2"H(50mm)

Connectors

Connector 1	DTM – A Key 12 pin
Connector 2	DTM – B Key 12 pin

Mounting

Magnetic	48 lbs. (21kg) force
Screw Option	3 x M3 screws

Other Features

NTRIP Client Built-in
Direction and speed inputs
PPP over IP Client Built-in

American Designed and
Assembled



Seirrowon.com - info@seirrowon.com

Austin Texas

Version 0.7.9/20/21

