

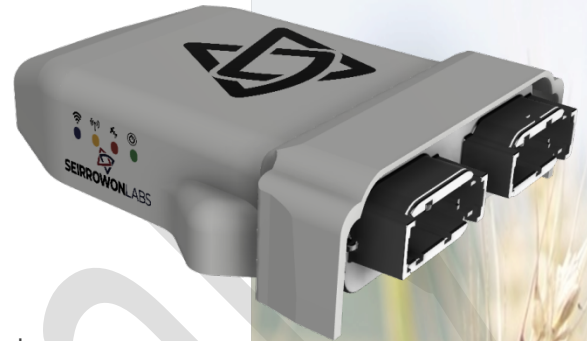


SL Lite Receiver

A complete, rugged GNSS position solution for agriculture

The SL Lite receiver offers a robust position solution for all agricultural applications. It is designed as a drop-in replacement for many legacy GPS and GNSS receivers.

No need to upgrade an old receiver when you can get completely unlocked RTK performance.



Fully Unlocked!

No nickel and diming here! All SL receivers are fully unlocked out of the box and ready for RTK and PPP.

Flat Earth (FE) - Precise Point Positioning (PPP)

Flat Earth PPP provides a solution that covers entire continents¹. Using an internet connection to receive the FE PPP correction you can achieve sub 2" (5cm) precision without the need for a base station or tower network. Converges in just a few minutes! "Load and Go" FE PPP allows you to purchase monthly subscriptions directly from the web interface with your phone or tablet. No more calling the dealer then waiting on activation.

B.Y.O. Cell Connection

You know the best Cell provider in your area. Why be forced to use a different carrier or have multiple plans. Either use your phone as a hot spot or use a rugged hot spot solution for RTK or Flat Earth corrections.

Advanced User Interface

Built in Web pages allow set up with any WIFI device (phone, tablet, or PC). No cables or special apps or software required. Presets allow quick, automatic configuration of new receivers when replacing older ones.

Remote Support

Via WIFI, the SL Receiver can send its settings directly to Seirrowon secured server allowing a replacement unit to be pre-configured before shipment, minimizing down time! Remote diagnostics also allow for fast diagnosis of issues.

Dual Antenna Functionality

Support for dual antenna heading is built in for very slow movement operations where GNSS heading is unreliable.

Tilt Compensation

The SL Lite has basic tilt compensation. The SL Lite R and SL Pro have full sensor fusion implementation for full terrain compensation. The SL Pro also has GNSS denied functionality for running under dense foliage.

1. FE PPP currently covers North America and Europe only. Other continents will follow.

Seirrowon Labs GNSS Offering

	SL Lite	SL Lite R	SL Pro
GNSS Output Rate	10Hz	20Hz	20Hz
GPS L1, L2C	✓	✓	✓
GLONASS L1, L2	✓	✓	✓
Galileo E1, E5a	✓	✓	✓
Beidou B1, B2		✓	✓
QZSSL1, L2C		✓	✓
L-band PPP			✓
PPP over IP	✓	✓	✓
Sensor Fusion			
Basic		✓	
Advanced			✓
Tilt Compensation	✓	✓	✓
Remote Backup	✓	✓	✓
Remote Support	✓	✓	✓
Simulated Speed	✓	✓	✓
PPS	✓	✓	✓
WIFI	✓	✓	✓
Bluetooth	✓	✓	✓
Web User Interface	✓	✓	✓
NTRIP Client	✓	✓	✓



Receiver Specifications

Signals	184 Channel
GPS	L1, L2C
GLONASS	L1, L2
Galileo	E1, E5B
QZSS	L1, L2C

	Static	P2P
Accuracy		
Stand Alone	5ft (1.5m)	12in (30cm)
SBAS	3.3ft (1m)	10in (25cm)
PPP	2in (5cm)	1in (2.5cm)
RTK	1in (2.5cm)	1in (2.5cm)
Tilt	± 1in (2.5cm) @ 6.7ft (2m) High	

Output Rate	10 Hz
Sensor Fusion	GNSS Embedded (Lite R & Pro Only)
TFFF	< 10s
Correction Types	RTCM3.x and PPP
Connectivity	2 x Serial ports Wi-Fi 802.11 b/g/n Bluetooth v4.2 BLE PPS or Speed
User Interface	Web UI
LEDs	Power, GNSS, Correction, and Wi-Fi/Bluetooth

Updates Support	Via Internet User-enabled Support Backup and Historical Diagnostic Information
------------------------	--

Operating Characteristics	
Temperature Operation	~ -22°F (30C) – 170°F (76C)
Storage	~ -40°F (-40C) - 185°F (90C)
Shock	TBD
IP Rating	IP67
Humidity	100%
Vibration	TBD
Electrical Power	9 – 32vDC < 1W
Dimensions	5"W(125mm)x7"L(175mm)x 2"H(50mm)

Connectors	
Connector 1	DTM – A Key 12 pin
Connector 2	DTM – B Key 12 pin

Mounting	
Magnetic	48 lbs. (21kg) force
Screw Option	3 x M3 screws

Other Features	
NTRIP Client	Built-in
PPP over IP Client	Built-in

American Designed and Assembled



Seirrowon.com - info@seirrowon.com

Austin Texas

Version 0.11 2/6/22

